

Commodore 64C metal brackets for long and short motherboards

Thank You for purchasing our metal brackets for C64C cases.

What have you received?

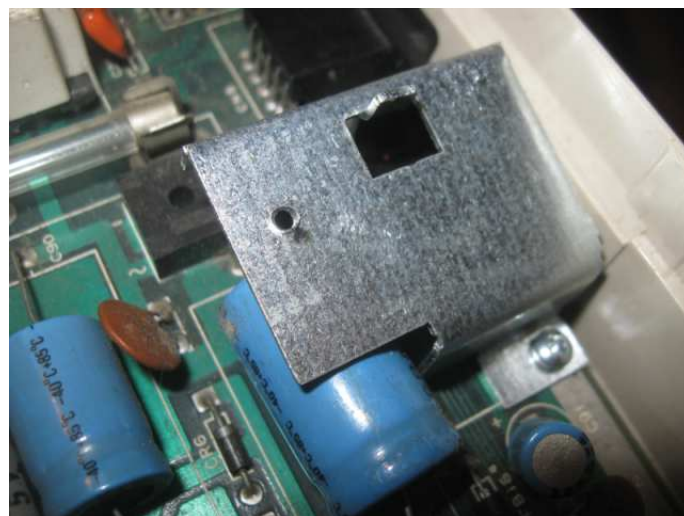
The package contain one pair of brackets and two pair of screws.

Installation with long motherboard (for short motherboard see next pages)

If you are dealing with old long motherboard, on the first step you have to unscrew the short metal masking frame which is located on the right side of the motherboard. With this frame it is impossible to locate the old motherboard in a C64C case.



Remove the metal frame and save for possibly future usage. Now you can put the motherboard in a C64C case. Next start with adding the brackets. Use longer screws to connect the brackets to the case.





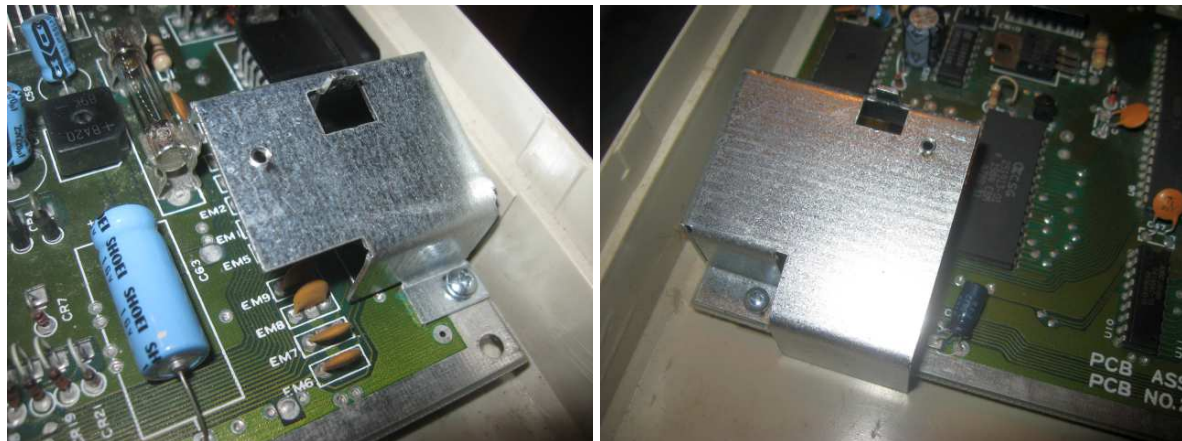
A close-up photograph of a mechanical assembly. A green printed circuit board (PCB) is visible, featuring a 90-degree bend in its edge. A metal rod or pin is inserted through a hole in the PCB. A black component, possibly a connector or a part of a test fixture, is positioned below the PCB. The text "90" is printed on the PCB near the bend, and "CN8" is visible on the right side.



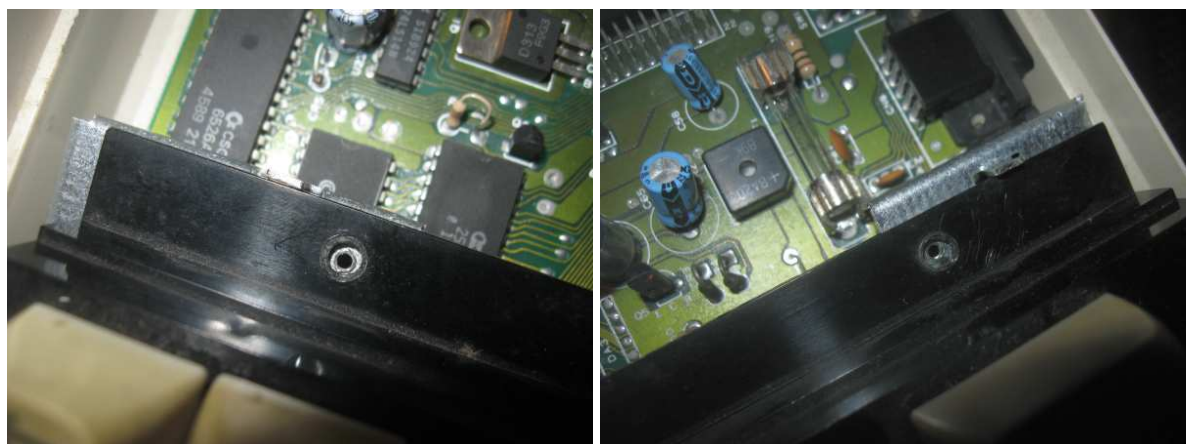
Now it's time to screw on the keyboard. And it's done!



Installing brackets for short motherboard. First screw on the brackets:

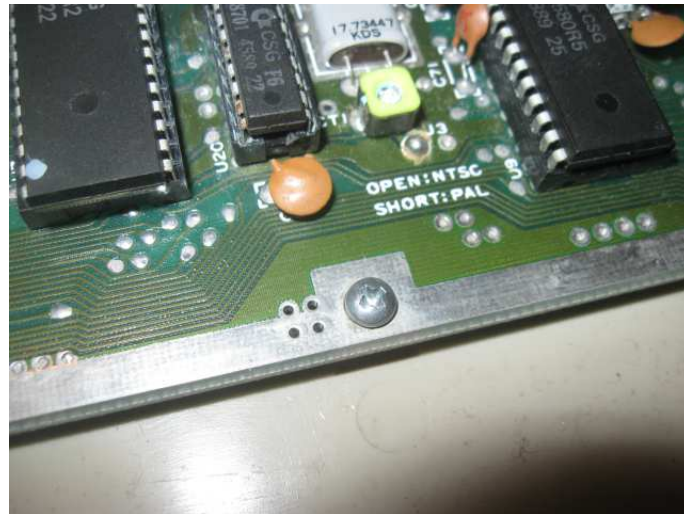


Next put the keyboard and centre the holes.



This operation should went very smooth. Next you have only to screw on the keyboard to the brackets using short screws and it's done!

Hint: short screws also fits perfectly for other holes so you can screw on whole motherboard to the case. Ask for additional set of screws during the order.

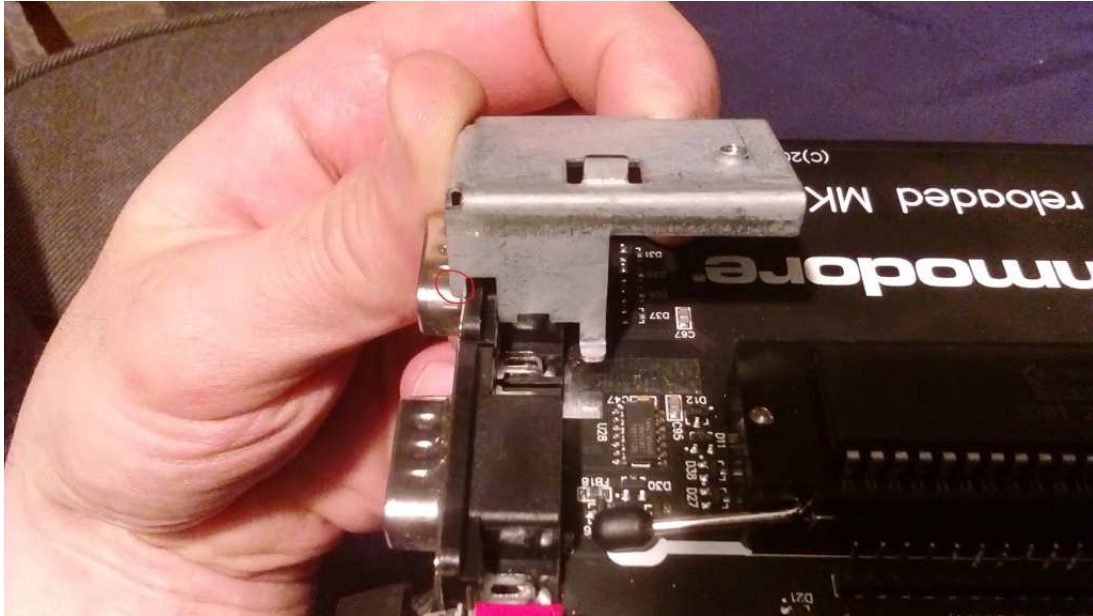


Let's compare old and new brackets. The shape is almost identical, except few very tiny details. New bracket is on the right on the pictures below.



Installing brackets with Commodore Reloaded MK2

Original and new metal brackets sometimes needs to be a little bit changed to match the Reloaded MK2 (and perhaps future Ultimate-64) board. It's because that the new boards have different joystick ports with metal shield. See picture below.



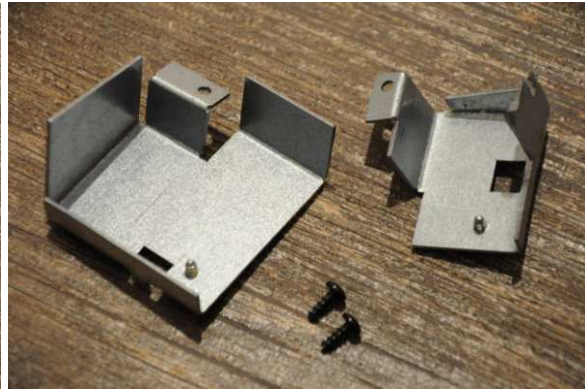
As you see on the picture, the right small part of the bracket may cause little troubles during installation of the bracket. You can:

- 1) cut or bend this part which is marked with red colour on the photo;
- 2) use metal file to let this small part to be more tiny (see photo below);
- 3) move the bracket to the right and have it installed at a very slightly different angle than 90 degrees (still you will be able easily to screw up the keyboard).



Please notice that our brackets are partially hand-made, so every unit is unique and prepared as close as possible to original. There still may be need for minimal interference in the shape of at least one bracket from Your side. We are taking care of checking every set of bracket

with C64C case, short/long motherboard and keyboard before shipping. Good luck with installing and happy using!



For questions, orders, write to v-12_tropyx@o2.pl